



CONTACTLESS

**TEMPERATURE SCREENING
+ FACE RECOGNITION**

with built-in Biometric Attendance

Get both attendance and temperature readings
of your visitor & staff without touching any
surface in one fixed facial recognition system



 **FACE
RECOGNITION
BIOMETRIC
ATTENDANCE**
with Temperature Recording



Temperature Taking



ISO:27001 Certified



100% Cloud



Multi-Language



Face Recognition attendance



Real-time push to cloud



Multi-Location / Time zone



Instant Reports



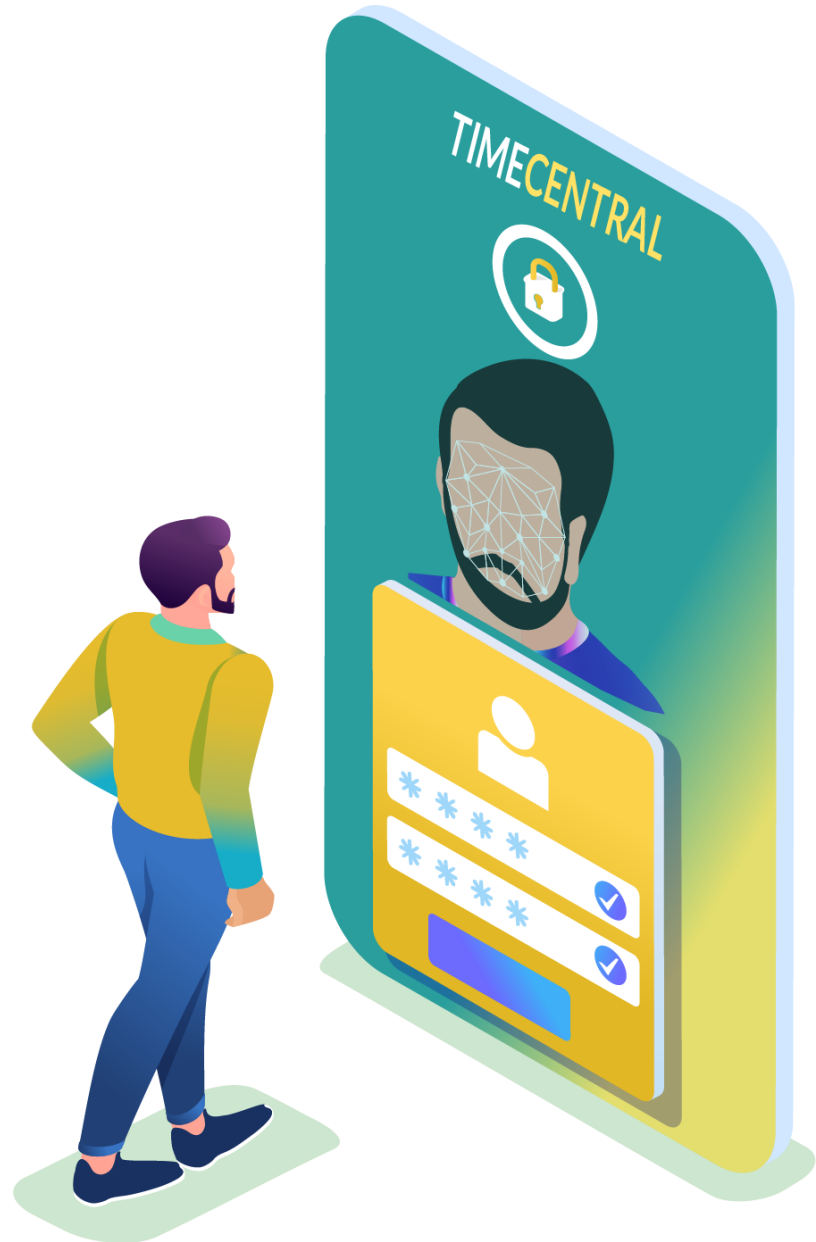
Completely Scalable

BIOTEMP

Biometric + Temperature

Contact-less authentication of attendance with
temperature recording in safest and effective way





Face Recognition

Face Recognition

Facial recognition is the process of identifying or verifying the identity of a person using their face. It captures, analyses and compares patterns based on the person's facial textures and shapes.

8-Inch Dual Camera Face Recognition

Face Capacity: **20,000**

1:N Face Recognition: **97.3%**

Scanning Speed: **1 Second**

1:1 Person Certificate Comparison: **More than 99%**

Temperature Alert & Alarm

Non-contact measurement of temperature readings of registered users i.e., staff/employees/workers and visitors as well throughout the day.

Modes: **Celsius / Fahrenheit**

Temperature Measurement range: **25C - 45C**

Thermal Image Field: **32x32**

Body temperature alarm value can be set

Enable/disable access based on threshold

Alerts can be configured.

Store temperature records to the database.

Appropriate measures can be carried out to those higher than normal temperature



Visitor Temperature Recording



Due to the evolving COVID-19 situation, employers must put in place stringent measures to safeguard the health of their staff and visitor which includes temperature screening, health declaration, and ensuring safe distancing measures are observed at all times.

BIOTEMP has facilitated temperature taking by facial recognition sensors and recording of visitor details without physical contact. This will speed up the whole process faster and reduce physical contact.

All offices who have adopted a temporary solution can now look forward to our automated solution that track visitors with their temperature readings on a daily basis.

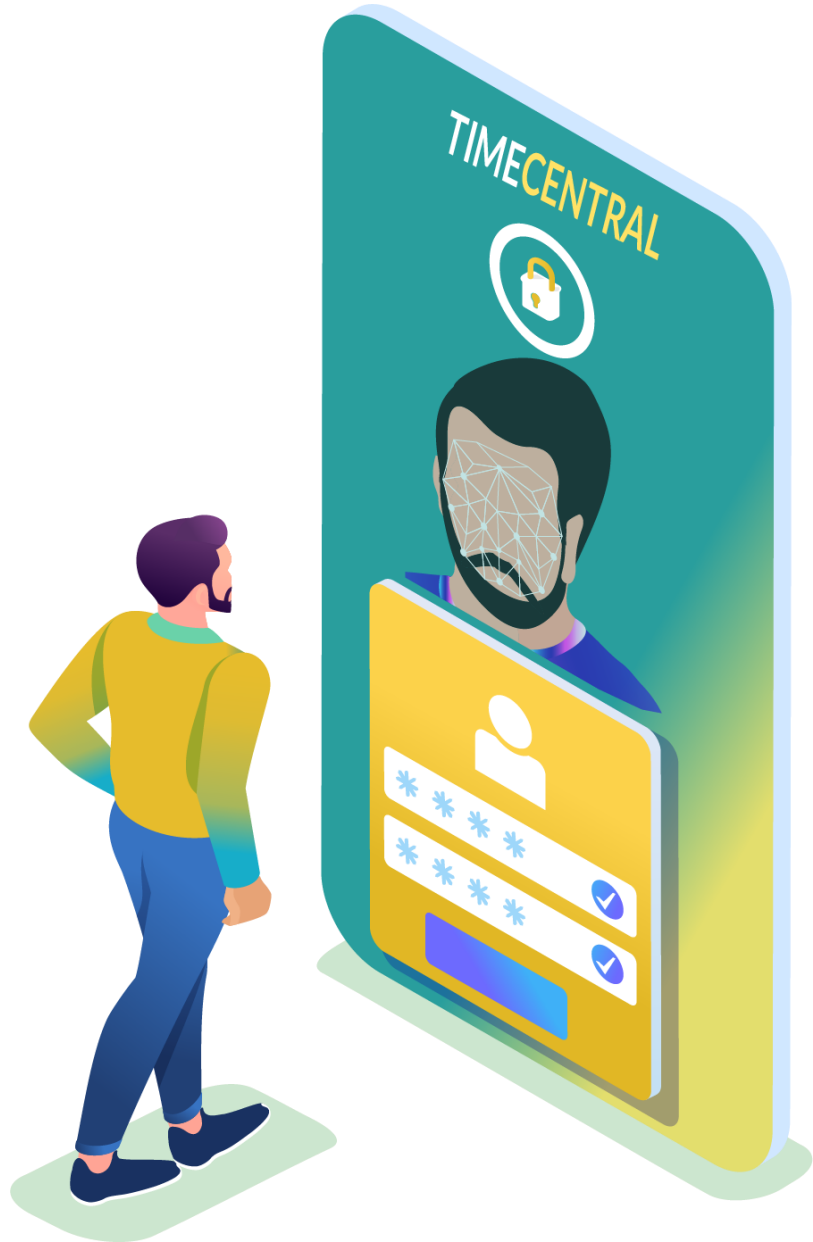
Realtime push to Cloud

Pushes data real-time to the cloud

Attendance, as well as temperature records, are transferred in real-time, making it easy for tracking and checking at the head office or operation center.

Prompting lateness and overtime reports in real time mode visible to managers by staff location or project.





Multi Time Zones

Works across the globe

Stay connected across the nation or the globe in one integrated system for all your offices, in multiple time zones.

TimeCentral platform unifies various devices to make sure stationed as well as mobile workforce is all covered.

Fixed Face biometric with temperature device + Mobile face recognition (Android & IOS device).

Blockchain Enabled

An Immutable Ledger

All records are stored on a private blockchain, making them immutable. There is no risk of data being manipulated nor accessible by third parties. This allows our customers to prove their records are true, using the laws of mathematics.

An added layer of security is provided by the use of a Trust Anchoring meta chain, which hashes your data in a widely shared public blockchain..



Get daily report via email, or view it on the browser



www.timecentral.co

User	Time	Value	Status
[User Icon]	23:10 01:57 36.2	36.2	Green
[User Icon]	23:10 01:57 36.2	36.2	Green
[User Icon]	23:10 01:57 36.2	36.2	Green
[User Icon]	23:10 01:57 38.0	38.0	Red
[User Icon]	23:10 01:57 36.2	36.2	Green
[User Icon]	23:10 01:57 36.2	36.2	Green
[User Icon]	23:10 01:57 39.0	39.0	Red
[User Icon]	23:10 01:57 36.2	36.2	Green
[User Icon]	23:10 01:57 36.2	36.2	Green
[User Icon]	23:10 01:57 36.2	36.2	Green
[User Icon]	23:10 01:57 36.2	36.2	Green

- [Bar]
- [Bar]
- [Bar]



Global Contact

Singapore

2 Kallang Pudding Road
#05-11 Mactech Building
Singapore 349307
+65 68372336

Malaysia

38-2, Jalan Teknologi 3/6C, Kota
Damansara, 47810 Petaling Jaya,
Selangor
+603 8605 3378

Philippines

Unit 1605 Medical Plaza Ortigas
Building, 25 San Miguel Ave, Brgy San
Antonio, Pasig City, Metro Manila 1605
+63 9959412322

India

2nd Floor, Shiva Complex Opposite
Lajwanti Hospital, Greater Kailash
ByPass Road, Jammu-180010, India
+0191 2484817

Nepal

G.P.O Box 8975,
EPC 5012, Swayambhu
Kathmandu, Nepal
+977 14890184

Thailand

Phahon 19, 2nd floor 1687/1
Suite 2073 Bangkok,
Thailand 10900
+66(0)84-583-2319

Partners:

Dubai
Spain
Myanmar
Cambodia
Vietnam
Indonesia
Hong Kong

60k+ users trust us



Copyright Advanced & Best Technologies Pte Ltd. All Rights Reserved.
A&BGROUP and its respective logos are copyright of Advanced and Best Technologies Pte Ltd in Singapore.
All other trademarks and logos belong to their respective owners.

www.timecentral.co
keepsafe@timecentral.co